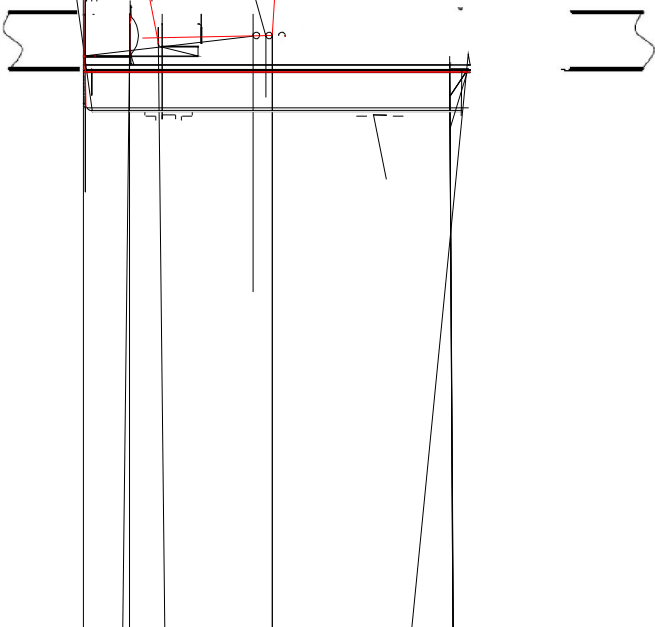
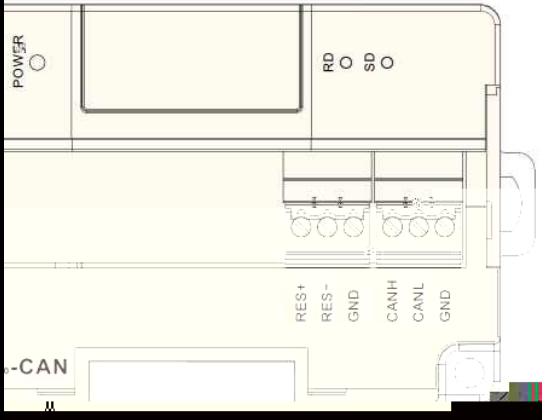


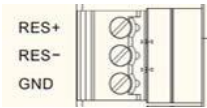
2.



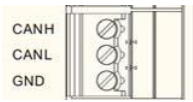


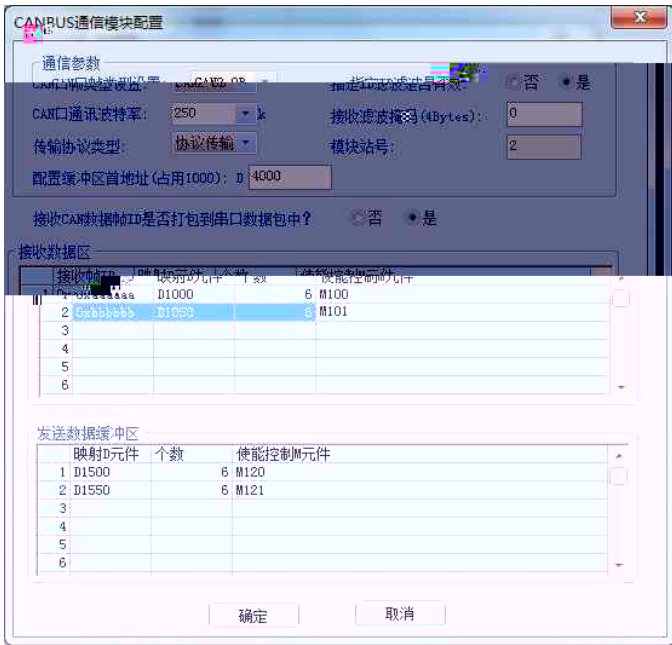
120

RES+ RES-



CAN





```

SM1 [ MOV 16#2 2 D100 ]
    [ MOV 16#10 16 D101 ]
    [ MOV 16#10 16 D102 ]
    [ MOV 0 0 D103 ]
    [ MOV 0 0 D104 ]
    [ MOV 6 6 D105 ]
    [ MOV 12 12 D106 ]
    [ MOV 16#1 1 D107 ]
    [ MOV 16#2 2 D108 ]
    [ MOV 16#3 3 D109 ]
    [ MOV 16#4 4 D110 ]
    [ FMOV 16#A5 165 D111 8 ]

M10 [ MODBUS 2 6 D100 2 D150 ]

/*通讯完成处理*/
SM137 [ INC 1 D200 ]
      [ RST OFF SM137 ]

```

